

# Kindergarten Parent Information



NOOSA  
CHRISTIAN COLLEGE  
COOROEY



**Inspiring | Caring | Supportive**



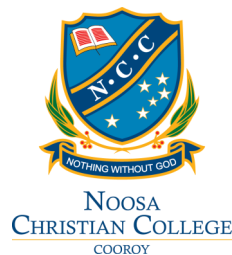
**A school for life**



# IMPORTANT INFORMATION ABOUT OUR KINDERGARTEN

## Location:

Noosa Christian College  
20 Cooroy Belli Creek Road, Cooroy Qld 4563



## Contact Details:

Approved Provider: Seventh-day Adventist Schools South Queensland Conference

College Contact: Phone: 07 5447 7808 | Email: [info@noosacc.qld.edu.au](mailto:info@noosacc.qld.edu.au)

Principal: Mrs Jeanette Martin, Dip. Prim. Teach. B.Ed. M.A.

Email: [principal@noosacc.qld.edu.au](mailto:principal@noosacc.qld.edu.au)

Teacher: Mrs Celeste Wareham, B.Ed. (Early Childhood)

Email: [kindy@noosacc.qld.edu.au](mailto:kindy@noosacc.qld.edu.au)

[celeste.wareham@noosacc.qld.edu.au](mailto:celeste.wareham@noosacc.qld.edu.au)

## Hours of Operation:

Kindergarten: Wednesday, Thursday, Friday

8:45am - 2:45pm

(Doors open at 8:30am and sign out from 2:45pm)

Office Hours: 8:00am - 4:00pm

Kindergarten children are able to travel to and from the College on the College buses.  
For further details, please contact the Bus Coordinator: [bus@noosacc.qld.edu.au](mailto:bus@noosacc.qld.edu.au).





Welcome to Noosa Christian College Kindergarten. For some children, it may be their first time away from their home environment and at Noosa Christian College we understand that for parents, selecting the right Kindergarten for your child is a very important decision. Please be assured that you have chosen a College that believes in providing a warm, caring Christian environment where the social, emotional, physical and intellectual development of each child is a priority.

We aim to provide the highest quality care, education and endeavour to partner closely with parents in the learning journey. Please take the time to read this booklet as the information will help you and your child settle in. If you have any questions or concerns, please contact our Kindergarten teacher who will be happy to answer your questions.

## Hours of Operation

The Kindergarten operates Wednesday, Thursday and Friday during school terms. The program runs from 8:45am to 2:45pm. Doors open at 8:30am for parents to sign in and settle their child before the Kindy friends begin their day.

Parents and caregivers are able to sign out their child between 2:45pm and 3:00pm.

## Calendar

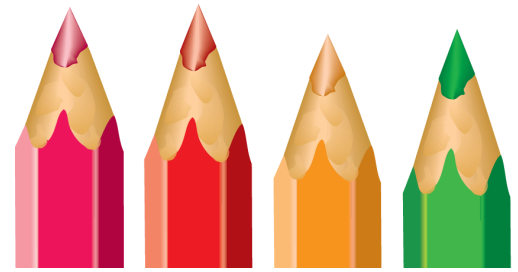
For term dates, you can access the Noosa Christian College yearly calendar on the College's website: [www.noosacc.qld.edu.au/calendar](http://www.noosacc.qld.edu.au/calendar)

There is also a running calendar on the front of the College newsletter which is published fortnightly.





# Our Kindy Philosophy



## Our Beliefs – Parent Involvement

Within our Kindergarten community your involvement as a partner in your child's learning is invited and encouraged. As research consistently demonstrates, such involvement maximises the effectiveness of early childhood development programs.

At Kindergarten we aim to:

- Make you feel valued and welcomed as part of our learning community;
- Share information about your child's learning experiences;
- Work with you in the way we care for and encourage your child's learning; and
- Involve you in your child's investigations, passion and discoveries.

By fostering these educational continuities from home and kindergarten, Noosa Christian College supports the philosophy that children are capable and competent, and the learning is collaborative and reciprocal, optimised by being spiritual, emotional, social and physical.

## Our Commitments – To Know, Relate, Imagine and Progress

Equality, inclusion and diversity underpin our Kindergarten's programs and practice. In developing our Kindergarten program our practice is founded on the belief that:

- Children are capable and competent;
- Children actively construct their own learning;
- Learning is dynamic, complex and holistic; and
- Children can initiate and lead learning and be active participants and decision makers.

An essential ingredient to this process is our physical environment and ensuring that it promotes our commitment to learning, inclusivity, independent exploration and learning through play.





# The Early Years Framework

The Early Years Framework (2009) states:

*Play provides a supportive environment where children can ask questions, solve problems and engage in critical thinking. Play can expand their thinking and enhance their desire to know and to learn. In these ways play promotes positive dispositions towards learning.*

## Our Learning – Early Years Learning Framework and Queensland Kindergarten Curriculum Guidelines

Our curriculum at Noosa Christian College, The Early Years Learning Framework and Queensland Kindergarten Curriculum Guidelines embodies our commitment to learning through play and to adapting to a changing season in our cultural climate. It a creative, expressive and flexible design that parents/carers and teachers negotiate and implement within their own contexts.

Encompassing and supporting this curriculum guideline is the knowledge that your child needs caring, responsive, sensitive people around them. When adults act with consistency and warmth, children:

- Build a sense of security and trust;
- Develop a strong sense of themselves;
- Feel confident in communicating their moods and feelings;
- Learn to interact with others in positive ways; and
- Develop resilience and the skills to cope with conflict, challenges and new situations.

## Our Health – A Sustainable Lifestyle

In our Kindergarten program at Noosa Christian College, our children's health, safety and environmental consciousness are noted, encouraged and endorsed with our curriculum projects. Connecting all children to their world whilst also allowing them to contribute enables children to have the best start in life to create a better future for themselves and the nation.





# Sustainability Program

Why develop an early childhood sustainability program?

One of the most significant responsibilities that early childhood professionals have is to support children to retain the sense of awe and wonder that they are born with, to add to that a desire to nurture and protect what is beautiful, and to encourage them to appreciate that there are many possibilities for honouring life and wonders that the world holds. (Stonehouse, 2006, pp. 72-73)

## Sustainability at Noosa Christian College looks like:

- At the beginning of each year, Emma Menzies from Noosa Council comes to Kindy and talks to the students about focusing on caring for our world and reminds us how to be sustainable.
- Recycle, Reuse, Reduce.
- Categorising our rubbish.
  - ⇒ General rubbish.
  - ⇒ Recycling.
  - ⇒ Food scraps – worms and chickens.
- Food scraps from our worm farm, converted into worm juice as nutrients for our plants.
- Scraps for the chickens provide us with delicious fresh eggs for our school community to purchase.
- Using paper and grocery boxes at the collage area.
- Using limited water in the sandpit.
- Using rainwater from our tanks for water play and gardening.
- Save water with our dual flush.
- Intentional teaching and supervision of hand washing using minimal water.
- Encouraging wrapper free lunch boxes.
- Reduce the number of paper towels used.
- Turn the lights off when we are outside or away from the class-room.



The Early Years Learning Framework strongly recommends that sustainability be ‘embedded in all daily routine and practices’ (DEEWR, 2009, p. 29) within early childhood settings, and that early childhood educators need to discuss with children that all ‘living things are interconnected’.





# Importance of Play

*Play is more than just fun... It's how children learn and how they work out who they are, how the world works and where they fit into it. Play is essentially a child's work and helps their brain grow while also being a lot of fun! (Lev Vygotsky)*

## **Block Play Encourages:**

- Problem solving
- Imagination
- Self-expression
- Mathematics



## **Imaginary Role Play Encourages:**

- Confidence building, resilience and fosters independence
- Children to navigate social terrain, language and communication
- Planning, wondering, remembering and predicting
- Children to work out who they are and what they love to do

## **Puzzles Encourage:**

- Perseverance
- Hand-eye coordination
- Problem Solving
- A sense of achievement



## **Sand and Water Play Encourages:**

- Body control, poise, balance and coordination
- Counting, measuring and sorting
- An understanding of cause and effect
- Exploration of colour, shape and texture in two and three dimensions





# Activities

## Numeracy Activities in Kindy:

Numeracy skills involve understanding numbers, counting, solving number problems, measuring, sorting, noticing patterns etc.

- Counting objects
- Pouring and measuring liquid
- Comparing different sizes
- Using words to describe where things are, e.g. over, under, next to etc.

## Literacy Activities in Kindy:

- Identifying and recognising their names
- Reading books
- Singing songs
- Finger Rhymes
- Sensory Play
- Talking
- Identifying signs
- Playdough
- Drawing and writing



## Gross Motor Development:

These skills require whole body movement which involve the large core stabilising muscles of the body to perform everyday functions like skipping, climbing, standing, sitting, walking, swinging, running, catching, throwing, jumping, hopping, etc.

## Fine Motor Development:

Involves the coordination of small muscles in the hands and fingers. Strong skills are essential to complete tasks like pinching, squeezing with a tweezer, picking up with a tweezer, writing, cutting, threading beads, moving puzzle pieces, zipping, buttoning etc.





# Education, Curriculum and Learning

We will be following the Early Years Framework (Belonging, Being, Becoming) and has a strong emphasis on play-based learning, and the Queensland Kindergarten Learning Guidelines, which enriches student's learning throughout the year, and our Education, Curriculum and Learning Policy. The QKLG will prepare the children for Prep. All Educators at our Service are trained and experienced in areas of early education and care.

The Educators will develop a daily program, observe the children in their care and plan their programs around the needs and interests of the children in child free time. If your child's Educators feel there is an area of concern, they will inform you and advise where help may be sought e.g. a speech therapist, occupational therapist, audiologist, psychologist etc. It is always your decision to follow this up. Educators are willing to discuss any aspect of development with parents.

## TRANSITION STATEMENT

**A Transition Statement is completed and shared with parents towards the end of the year. It is a summary of each child's learning and development during their Kindergarten year.**

## Parent Involvement

We welcome all family members to our College and we encourage when possible, for families to be involved in your child's program. There are many ways for your family to be involved. We understand that our busy lives can't always afford the time, however, any contribution, no matter how big or small is much appreciated.

Family members are welcome, however, they may need to apply for, or present their Blue Card at the College office before they can spend time in the Kindergarten and sign both the Kindergarten Volunteer Register and COVID19 sign in via QR code. Please check with the College office for further details.

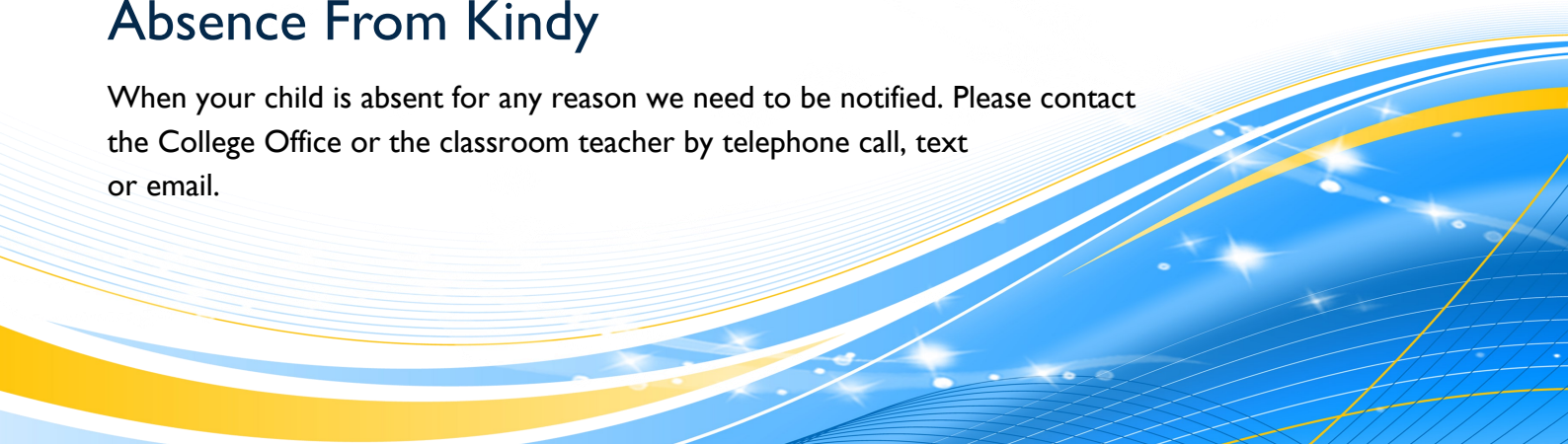
Parents are encouraged to offer suggestions about our program and the Kindergarten as a whole. We value the feedback from parents so that we can best meet the needs of our families.

## Arrivals & Departures From Kindy

It is a legal requirement that parents sign their children into Kindergarten when they arrive in the morning and sign them out when collected at 2:45pm. We need to make sure that all people who sign your child in or collect them, are on the list of 'Authorised Persons' on the Kindergarten enrolment form.

## Absence From Kindy

When your child is absent for any reason we need to be notified. Please contact the College Office or the classroom teacher by telephone call, text or email.





# Class Size and Age

Classes are restricted to 22 children. Children must turn 4 years of age by 30th June, 2022.

To meet requirements for entry into the funded program, the Queensland Kindergarten Funding Scheme, children must be enrolled 3 days a week.

## Daily Routine

A typical day in Kindergarten would include some of the following:

- Art, craft and other fine motor skills activities
- Physical education and games for gross motor development
- Rhymes, singing, poetry and music
- Movement and drama experiences
- Science and discovery experiences
- Outside play
- Free role play
- Books and stories
- Quiet time for rest, or a sleep, depending on the needs of each child

## Uniform

The Kindergarten children will have their own uniform that will be available for purchase.

- Maroon shorts (from Uniform Shop)
- NCC Kindy polo shirt (from Uniform Shop)
- College bucket hat (from Uniform Shop)
- Maroon fleecy track suit (from Store)
- Black joggers with Velcro straps (from Store)
- White socks (from Store) or School Sport Socks (from Uniform Shop)





# What to Bring

## MORNING TEA

Please provide fresh fruit, vegetables, cheese or yoghurt for morning tea time, (already cut) and in their lunch box, clearly labelled with your child's name on it.

## LUNCH

Children need to bring their own lunch in a lunch box clearly labelled with their name, and one they can open and close themselves.

We aim to provide children with a basic understanding of healthy eating habits, so please do not send sugary cakes, sweet biscuits, lollies, chocolates, chips, poppers etc.

Our Food and Nutrition Policy outlines the guidelines for nutritious and healthy food. A copy is available for parents. No peanuts please as we could have children with allergies.

## DRINK BOTTLES

Please send a bottle of water each day with your child. We ask that you do not send poppers as they tend to spill and are not nutritionally recommended. Water is available at all times.

## REST AND SLEEP

Rest time routine caters according to individual needs. We aim to make rest time a relaxed, pleasant time for all children. We provide mats for children and you can provide a set of cot sheets. Your child may wish to bring a security item, a small pillow or special blanket to have at rest time.

On your child's first day of the week, please bring a cot-sized bottom sheet (these fit our mats perfectly), a top sheet and a small light blanket for cold weather in a named draw-string fabric bag (e.g. a pillow case). Bedding should be taken home on the last attendance day of the week for washing. This is in order to comply with health practice. Please feel free to discuss your child's rest needs with Educators.

## CLOTHING

A spare set of uniforms each day with several pairs of underwear, (younger children may need extra changes in case of any accidents).

## BAG LOCKERS

Each child is allocated a bag locker. Please place your child's bag in their locker when you arrive.

## OUTSIDE POCKETS

We place general notes and parent information into the pockets with your child's name on it.

*"Building Pathways to Success"*





## BIRTHDAY TREATS

Birthdays are a special occasion and cause for celebrations! You are most welcome to bring in a treat (cupcake, ice block etc.) to share with you child's Kindy friends.

## Teachers

Kindergarten Teacher  
Mrs Celeste Wareham



Kindergarten Teacher-Aide  
Miss Chanel Schild



*A beautiful learning environment ... Dedicated teachers*



# Noosa Christian College - Vision and Mission



NOOSA  
CHRISTIAN COLLEGE  
COOROY



## OUR **VISION**

To inspire and lead students into a personal relationship with God through Adventist education.



## OUR **MISSION**

To actively build relationships and provide students with a holistic education; engaging them in a community of faith and learning to develop character, values and skills for life.



# Noosa Christian College - Values



## OUR GUIDE

Matthew 7:12 "So in everything, do to others what you would have them do to you..."

Philippians 4:8 "...whatever is true, whatever is noble, whatever is right, whatever is pure, whatever is lovely, whatever is admirable - if anything is excellent or praiseworthy - think about such things."



## OUR VALUES

What we believe in and how we will act.



Respect

Value yourself and others through your words and actions.



Responsibility

Make wise choices and be accountable in all situations.



Effort

Work to the best of your ability and don't give up.



Compassion

Be kind and understanding of one another at all times.



Service

Put the needs of others first and lend a helping hand.



Integrity

Do the right thing even when others aren't watching.



